

# MS - VERSATILE INSTRUCTION MANUAL



oliser

Mesrutiyet caddesi. Hatay Sokak. 17/B  
06640. Kızılay / Ankara  
Turkey

Tel : +90 312 417 72 75

Fax : +90 312 425 72 81

Web : [www.oliser.com.tr](http://www.oliser.com.tr)

Email : [oliser@oliser.com.tr](mailto:oliser@oliser.com.tr)

## >>WARNING<<

### Suggestions when using Oliser's Inkjet Filling Machines

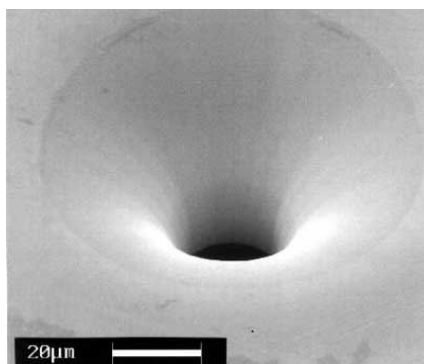
1. **Oliser suggests using water when operating the machine for the first time**
2. **A pencil eraser can be used to clean the circuits on a cartridge**

### CARTRIDGE CLEANING BY STEAM GENERATOR



Please clean the cartridge print head using the steam generator. *(Oliser sells TWO versions of Steam generators; one has a closed in housing, whereas the other is an open-environment unit)*

This operation opens clogged nozzles where dried ink cements itself in the jets. This is a very important function that needs performing before filling or evacuation procedures are undertaken.



Empty the cartridge if necessary (we recommend all old ink is evacuated).

To undertake this step, you will first need to connect the evacuation pipe-peripheral in the correct and allotted slot into the suitable cradle (fixture).

**To Order Call: +90 312 417 72 75 / [oliser@oliser.com.tr](mailto:oliser@oliser.com.tr)**

## RECOMMENDED FILLING VOLUMES

>>We suggest you to fill the below listed amounts<<

### Oem Code

C1823D  
51625A  
C6625A  
C8728A  
51640 CMY  
51641A  
HP 51644 CMY  
51649A  
C6657  
C6578D  
C6614A  
C6615A  
51626A  
C8727A  
51629A  
51633  
51640A  
51645A  
C6656  
8R7881  
8R7638 / 8R4055  
108R00140  
108R319  
Xerox C4 / Olivetti  
8R7879  
8R7880  
108R00141  
Xerox C4  
10N0016  
12A1970  
12A1976  
13400HC  
13620HC-1680620  
17G0050 Black  
10N0026 Color  
12A1980  
13619HC Color  
15M0120  
17G0060 Color  
BC-01  
BC-02 / BX 3  
BC-20  
BC-05

### Ink Volume

10ml each color = 30ml  
7ml each color = 21ml  
10ml each color = 30ml  
4ml each color = 12ml  
42ml  
13ml each color = 39ml  
42ml  
7ml each color = 21ml  
6ml each color = 18ml  
10ml each color = 30ml  
40ml  
42ml  
40ml  
15ml  
40ml  
40ml  
42ml  
42ml  
19ml  
35ml  
50ml  
35ml  
35ml  
15ml  
35ml  
7ml each color = 21ml  
7ml each color = 21ml  
4ml each color = 12ml  
18ml  
35ml  
35ml  
35ml  
35ml  
35ml  
4ml each color = 12ml  
7ml each color = 21ml  
7ml each color = 21ml  
7ml each color = 21ml  
7ml each color = 21ml  
7ml each color = 21ml  
26ml  
26ml  
40ml  
7 ml each color = 21ml

# CLENIING AND EVACUATION CONTROL PANEL

Pressurizing Time Setting Button  
0-9 Sec.

Cleaning Time display/minutes

Filling Start/Stop Button



Filling Time Adjustment  
Button

Evacuation Start/Stop  
Button

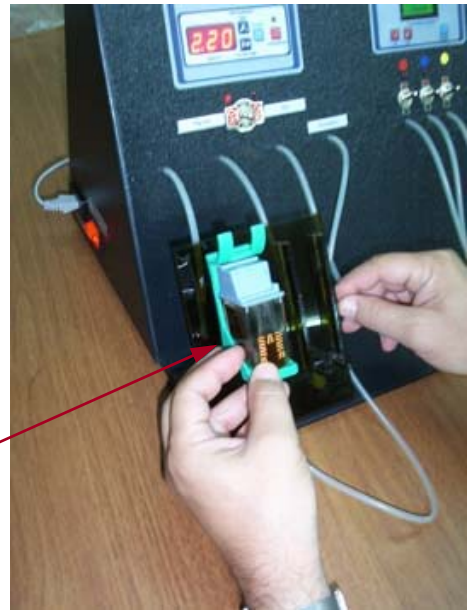
## 26/29/14 EVACUATION



Empty the cartridge if necessary (we recommend all old ink is evacuated).

To undertake this step, you will first need to connect the evacuation pipe-peripheral in the correct and allotted slot into the suitable cradle (fixture).

Place the cradle fixture on the machine base platform in its correct "park" position - as shown above.



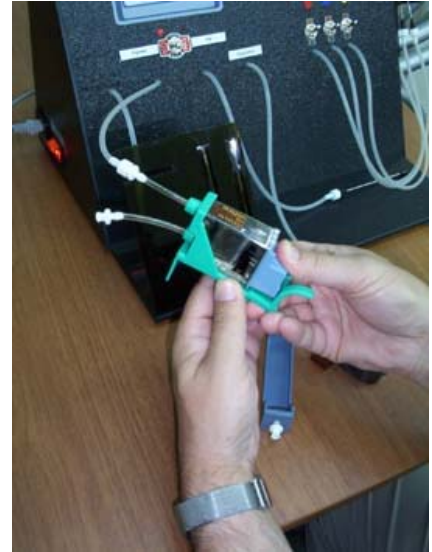
---

Push the evacuation button to activate the function of emptying the old ink from the cartridge.

Note: Empty weight of 26/29/14 cartridges is 20 Grams.

---

## 14/26/29 FILLING



HP small-profile cartridges, such as 51626A, 51629A, C6614 use different inks. Older HP51626A cartridges use dye-based ink, whereas 51629A and C6614 units require pigmented inks (although both inks will work in either type of model). Connect the filling connector to the cartridge holder and flip the select switch to DYE or PIGMENT depending on the cartridge and/or your own selection. You can fill cartridges through both methods, namely: - MAZE HOLE or PRINT HEAD. Pressurizing (also known as Equalizing or balancing) is automatic, as the machine has built-in intelligence to undertake and perform this function for you. Set the filling time to 2.40 and pressurizing to 9-seconds. Push the filling start button to commence operations.

\*\*\* Cartridge is ready to test print \*\*\*



To Order Call: +90 312 417 72 75 / [oliser@oliser.com.tr](mailto:oliser@oliser.com.tr)

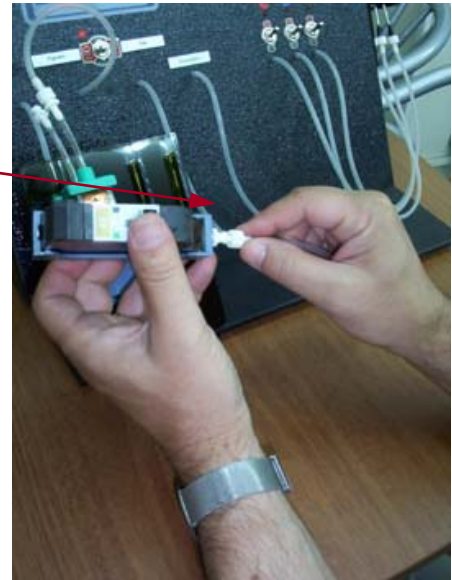
## 15/45 EVACUATION



Please clean the cartridge print head using the steam generator.

This operation opens clogged nozzles where dried ink cements itself in the jets. This is a very important function that needs performing before filling or evacuation procedures are undertaken.

Connect the evacuation connector to the 45/15 cradle.



---

Place the cradle fixture on the machine base platform in its correct "park" position - as shown above.

---

Push the evacuation button to activate the function of emptying the old ink from the cartridge.

Note: Empty weight of 15/45 cartridges is 66 Grams.

**To Order Call: +90 312 417 72 75 / [oliser@oliser.com.tr](mailto:oliser@oliser.com.tr)**

## 15/45 FILLING



After you have evacuated and weighed the cartridge, connect the pigment ink line (pipe) to the relevant inlet connector on the cradle holder.

Now place the cartridge cradle back in its park position.  
Set the filling time to 2.40 and pressurizing to 9-seconds.  
After push to the filling start button.

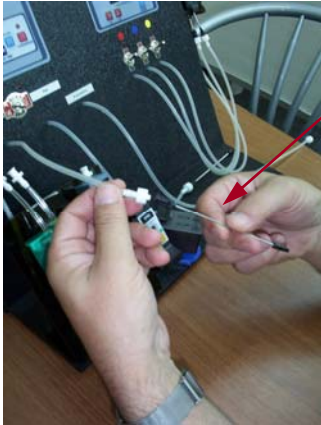


Note: Full weight of cartridge will be around 106-108 Grams.

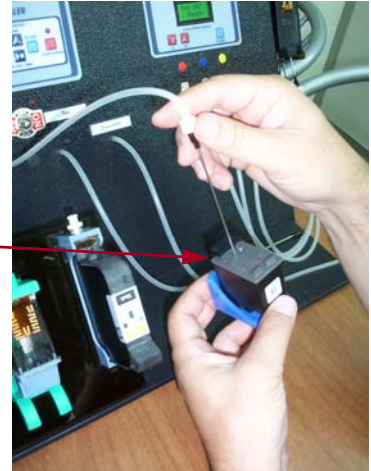
**\*\*\* Cartridge is ready to test print \*\*\***

To Order Call: +90 312 417 72 75 / [oliser@oliser.com.tr](mailto:oliser@oliser.com.tr)

## 27/56 FILLING



Connect the supplied needle to the pigment filling connector, by screw-in action



Peel off the OEM sticker; revealing 3 fill hole positions. Place the cartridge into the allocated cradle holder and insert the needle into front hole (forward: towards the cartridge electronics side).

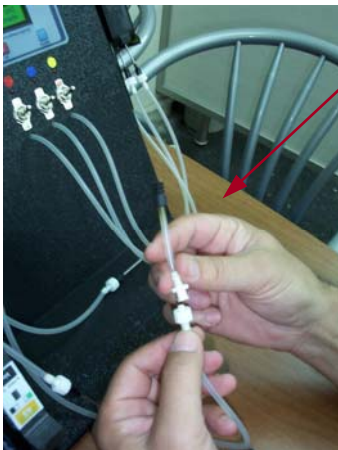
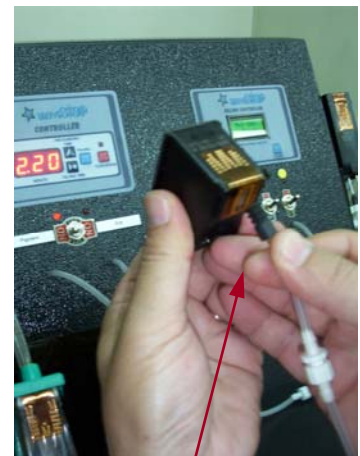
Caution: - Make sure you insert the needle diagonally and NOT straight down (otherwise you will puncture the bubble-breaker diaphragm)



Set the filling time to 0.55 for #27 and 1.05 for #56 cartridges.  
Important Note: - Pressurizing time 0 (*See Point 16 for priming functions*)

PRIMING:  
After filling is completed:  
connect the vacuum (suction cap) to the evacuation connector.

Remove the cartridge from the cradle.



Place the suction boot (cap) onto the cartridge nozzle plate. Push the evacuation button and suck for between 3-5 seconds, as shown above.

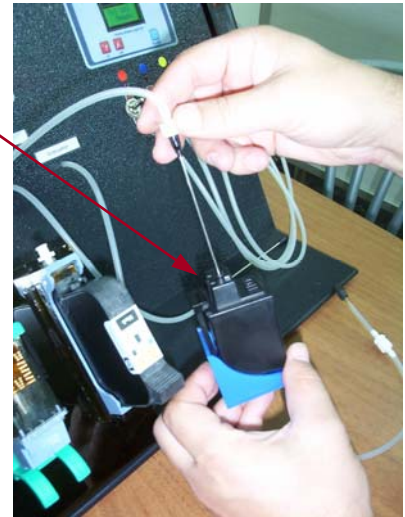
**\*\*\* Cartridge is ready to test print \*\*\***

# LEXMARK BLACK FILLING



Place the empty cartridge into its relevant holder.

Insert the filling needle through ventilation hole in cartridge lid; you might need to use screwing action to widen hole slightly.



Set the filling time to 1.40 for lexmark 1970, 13400, Xerox similar cartridges.  
Important Note: - Pressurizing time 0 (See Point 16 for priming functions)

Place the suction boot (cap) onto the cartridge nozzle plate. Push the evacuation button and suck for between 3-5 seconds, as shown above.

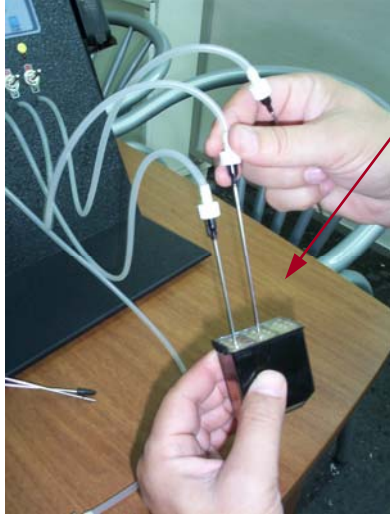
**\*\*\* Cartridge is ready to test print \*\*\***



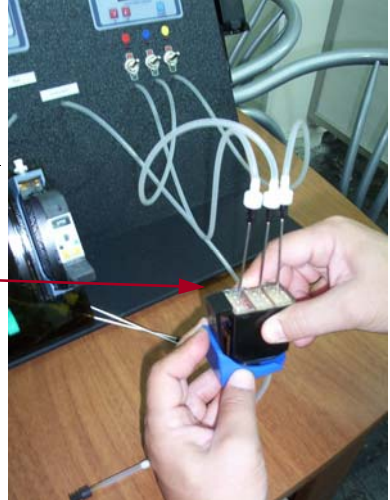
**Set the filling time to 0.32 for lexmark #17 and 1.06 for lexmark #16.  
Important Note: - Pressurizing time 0  
(See Point 16 for priming functions)**

# HP-25/49 FILLING

Remove cartridge cap using Oliser Lid Opener



Insert the needles into the sponges in synchronization with correct colour matching

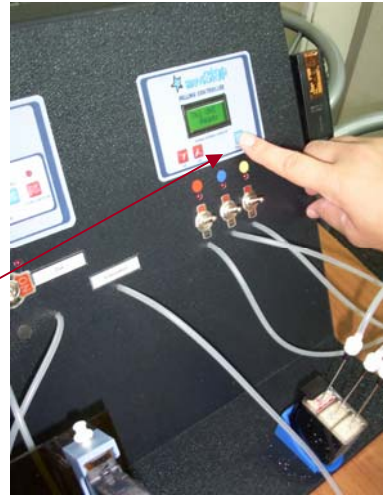


Place the cartridge into its designated cradle holder.



Set the ink filling capacities as required (For 25/49 it will be 7 ml per chamber (per colour).

Push the filling / start button.  
You can select which color you want to fill optionally using the manual (toggle) switches.



After filling do the priming/balancing function

**\*\*\* Cartridge is ready to test print \*\*\***



# HP-23/25/41/78 FILLING

## Removing the Ventilation Plugs



Remove the ventilation plugs (screws) by pushing them through the cartridge outside casing. *(You may achieve this, through a multitude of methods, however Oliser makes its own special tool for ease of use: **MS-PLUG PUSHER**. We recommend this method)*



Before going further, we recommend that the cartridge be drained. The best manual method is to use paper towel. First steam cartridge nozzles, with Oliser **MS-STEAM**, then place cartridge in upright position *(propped up against a wall or other object so cartridge is in vertical position)*. This may take time *(maybe even overnight)*.

Oliser we will not be in a full position to advise you on best to do this if the client is waiting for the said refill in your storefront. If you know this will cause a bottleneck in your business, then you will have to invest in the Oliser **MS-CENTRIFUGE**, which can evacuate all old ink within seconds.

## CENTRIFUGE



The mixing of aftermarket inks with original inks is not advised. The main reason is that homogenization between the two types may not occur, and as such inhibit ink flow at a later stage.

Oliser has spent thousands of hours in R&D on inkflow and ink formulae, and as such advises the use of its inks. In the case of 6578 cartridges our inks are very good and homogenization is more likely than with using many other inks on the market.

The empty weights of the large profile cartridges is as follows: - **C6578 (92g); 1823 (94-98g); 6625 (92g); 51641 (92g)**

**To Order Call: +90 312 417 72 75 / [oliser@oliser.com.tr](mailto:oliser@oliser.com.tr)**

## HP-23/25/41/78 FILLING



You may also aid the evacuation process, in part, by using the suction pipe on the MS-Versatile.

← Insert the needles into the sponges in synchronization with correct colour matching. As per the illustration (picture shown) the colors, from left to right, are: **YELLOW**, **MAGENTA** and **CYAN**.

Place the cartridge on the right hand side of the machine, in its correct "park" position - as shown.

You notice the cartridge is inverted. Filling in an upside down position (without vacuum) has been proven to yield the most successful results.



← Adjust the ink volume for C/M/Y as per your own selection.

Push the filling START/STOP button to activate the filling of the cartridge.



← After filling is completed, remove the cartridge from its designated park position and remove the needles (*always take care to keep needles clean – to avoid cross-contamination*).

The next function to perform is pump-priming and air bubble air removal. This is undertaken with pump (included) in shipments (from 1 July 2004); alternatively it can be purchased as an optional extra.

← Place the pump over ventilation holes (at bottom of cartridge, when inverted) as shown.

This must be done for each individual colour. Push the pump gently and attentively watch the head (nozzle plate) for results.

If bubbles (foam) appear, this has to be removed. Clean the nozzle plate immediately and rapidly to avoid cross-contamination. Repeat this process until clear flowing ink is achieved (no bubbles at all must be present).

This must be repeated for each colour.

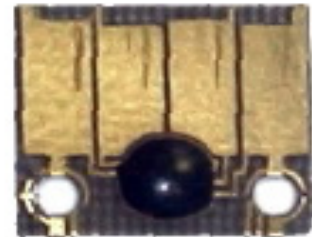
The reason we need to remove foam is so that it will not involve itself in the inkflow cycle and cause white lines (banding) in the print.

Once you have performed this careful function on all three chambers, dab, in a downward motion the cartridge nozzle place onto padded paper towel. Ensure that all three colors appear in a rectangular fashion.

**\*\*\* Cartridge is ready to test print \*\*\***

# INSTALLATION & REFILL INSTRUCTIONS of for use on HP -2000/2050/2500 InkJet Cartridges

HP 2000/2500/2200/2250 cartridges are fitted with lockout chips located in a chip cavity specifically made to house these chips and are located at the same end as the dispensing membrane and pump units



The tools to refill the cartridge and fit the chip are basic. A rubber-nozzle filling syringe, a short needle priming syringe, a beveled side and chisel type cutting tool and a plug removing tool. The use of each tool will be described below. All tools are available from OLISER as a tool kit however most of the tools are available from your local hobby or hardware store



Cut the adhesive label where the label connects to the base and the cartridge cap on both sides of the cartridge. Once cut - remove the cap. This can easily be done by hand - no special tools are required

To Order Call: +90 312 417 72 75 / [oliser@oliser.com.tr](mailto:oliser@oliser.com.tr)

Turn the cartridge cap so that the chip is exposed and use the bevelled cutting tool to remove the OEM chip. This chip is expired and can be discarded. Do not remove the sticky double sided tape which held the OEM chip in place as this tape will be useful to keep the chip in place.

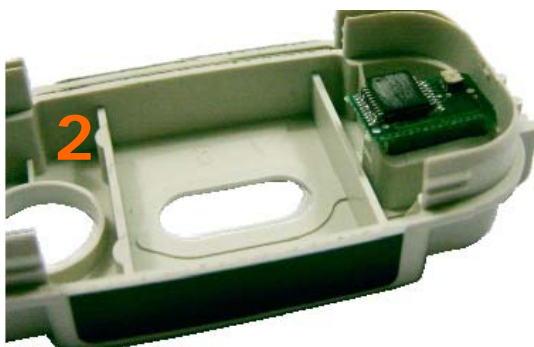


Turn the cartridge the around, the cavity mould will be accessible. Use the chisel cutting tool to cut the edge of the cavity mould at a 45 degree angel corner of the right hand corner of the cavity box. With a bit of practice, this shear cut will become easy and can be done in a single sweep. The result should be a slot about 12mm long and 3mm in width. This is the most difficult part of the refilling process. Use the side cutting tool to remove any unwanted material and clean up the slot.



A close-up of the modification should look like the graphic below. The chip can now be fitted.

When fitting the chip, the component side should remain inside the cartridge while the contact board is positioned into the slot.



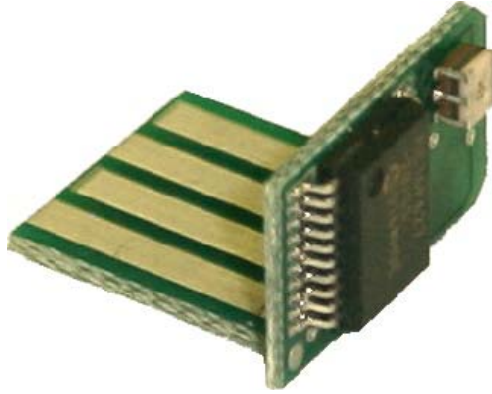
Use the plug removing tool to hook and extract the rubber ball plug as shown. The plug is elongated and can be used over and over again. A good tool will remove the plug without any damage to the plug. This tool can be used to replace the plug after filling. Do not worry about pushing the plug into the cartridge, it has a stopper to prevent this.



The cartridge can now be refilled using the rubber nozzle syringe. Charge the syringe with the prescribed amount of ink depending on colour. Place the nozzle squarely over the plug opening and use small push-pull actions on the syringe to displace the air in the cartridge with the ink in the syringe. Once complete, replace the ball plug. It is necessary to remove all the air still trapped inside in the cartridge, as the next step will remove it.

Removing the air or priming the cartridge is accomplished by holding the cartridge in an upright position with the air at the top and then inserting the short needle syringe into the center of the membrane shaft. Gently pull on the syringe plunger to cause a vacuum in the cartridge. This action will remove any air trapped from the refill process.





Repeat the priming process until all air is replaced by ink in the transparent membrane shaft. Reattach the top cover to the base of the cartridge. Where the OEM label was originally cut, you can use transparent tape to re-secure the cap to the base of the cartridge. Once done your cartridge is now ready to for use.

### HP 4844 HIGH YIELD - BLACK

EMPTY	44 grams
INK	69 ml
	<b>113 grams</b>

### HP SMALL INK TANKS

EMPTY	32 grams
INK	28 ml
	<b>60 grams</b>

# Tube replacement of motors

